

# Creating Fiscally Innovative Approaches to End the HIV Epidemic

Tarrant County HIV Administrative Agency

Rebecca V. Seymore, Financial Analyst

Lisa Muttiah, Grants Manager

Jeffery Parks, Community Member

20  
22

NATIONAL  
**RYAN WHITE**  
CONFERENCE  
ON HIV CARE & TREATMENT

# Fort Worth/Arlington Transitional Grant Area (TGA)

- Four north central Texas counties (Tarrant, Hood, Johnson, Parker)
- 2,918 square miles in the four-county TGA
- 85% (2,110,640\*) of the TGA's general population reside in Tarrant within its 897 square mile area
- Two major cities within Tarrant County are Fort Worth (12th largest city in US) and Arlington
- 39 other suburban cities and towns within Tarrant County
- **TGA** – Hood County, Johnson County, Parker County, and Tarrant County
- **HSDA** – add Erath County, Palo Pinto County, Somervell County, and Wise County

\*2020 Census

Fort Worth TGA, Fort Worth HSDA Map



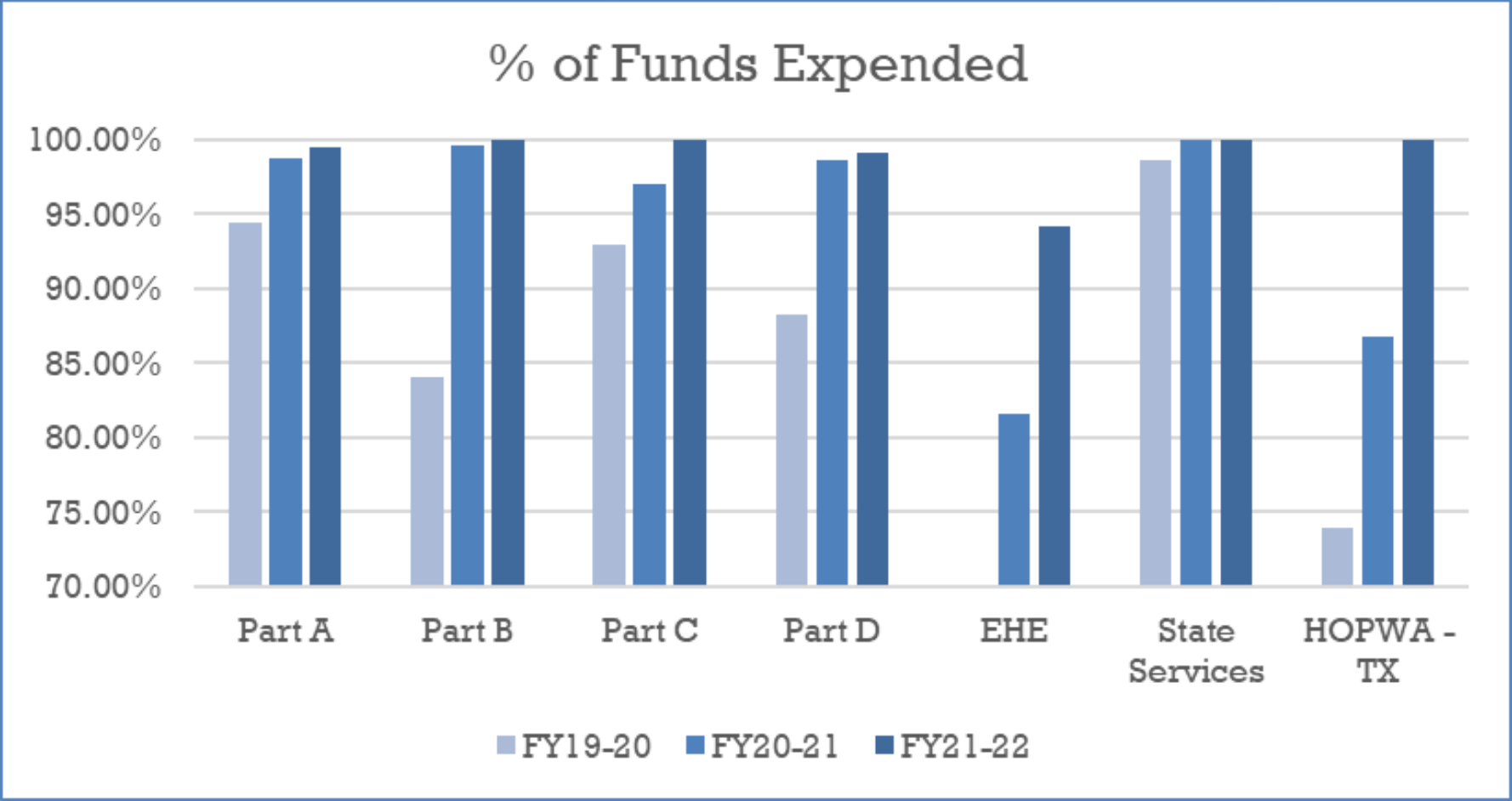
# Learning Objectives

1. Demonstrate how to partnership between financial and program help to meet the changing needs of clients.
2. Offer Insights into innovative funding processes driven by community engagement and equitable decision-making practices.
3. Discuss how lessons learned during the peak of the COVID-19 pandemic have led to more streamlined and innovative processes that allow for increased responsiveness in support of services to End the HIV Epidemic.

# Grants

- Part A
- Part B
- Texas HIV State Services Funding
- Part C
- Part D
- Housing Opportunities for People with AIDS (HOPWA)
- Ending the HIV Epidemic

# Financial Stats in Review



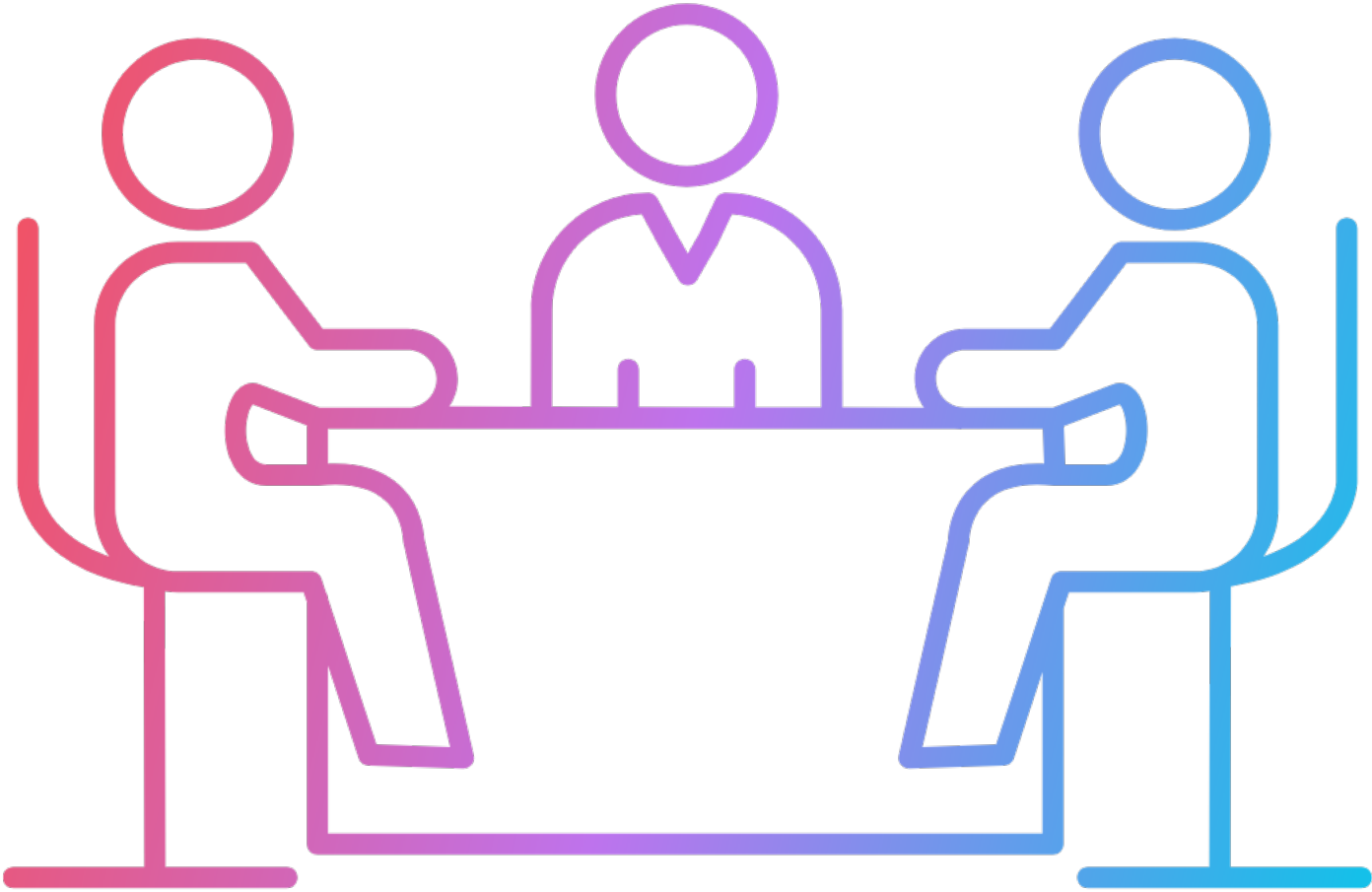
- Ending the HIV Epidemic (EHE) was first awarded in FY20-21

# Goals

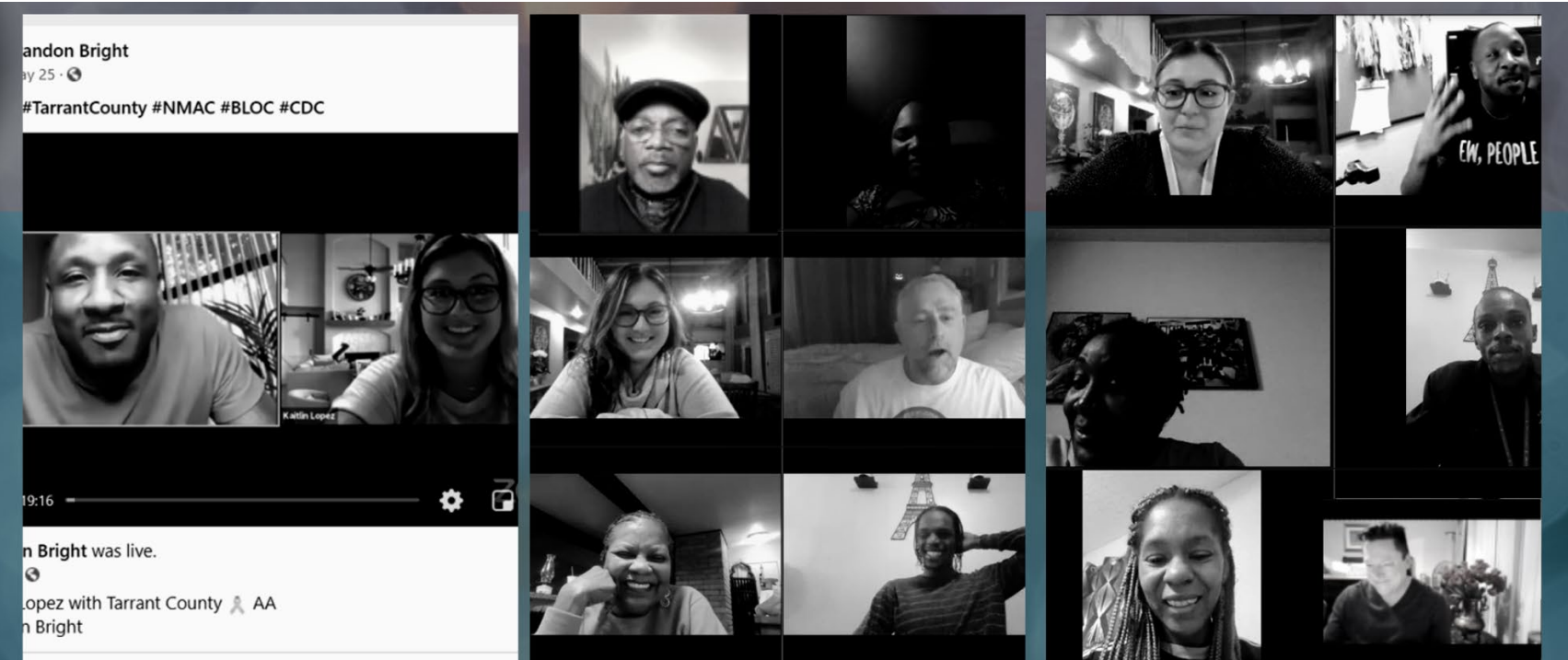
- Assure funding is spent locally on People Living with HIV
- Meet the changing needs of PLWH
- Adapt to challenges presented by COVID-19



# Setting the Table



# Importance of HIT and PLWH



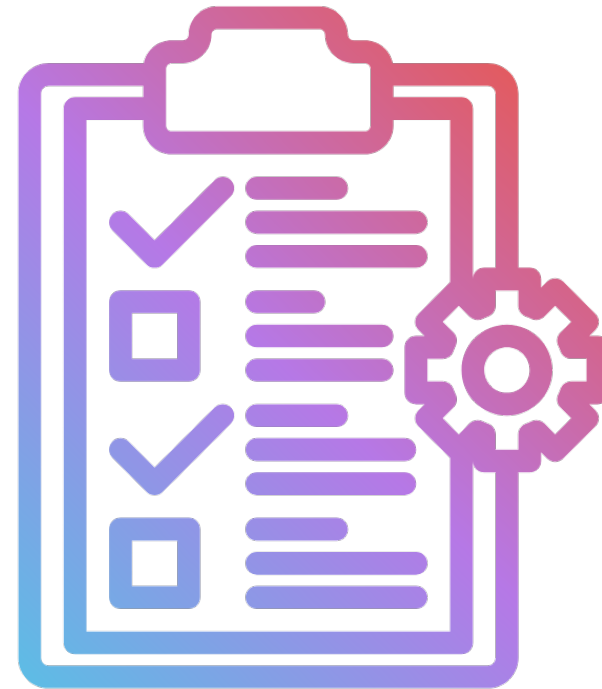
# HIT HIV

- HIT HIV
- Listening to the voices of PLWH
- Identifying the changing needs of PLWH
- “Just in Time” client needs assessments



# Administrative Changes

- Single Source Funding
- Policy changes
- Proactive reallocation and redistribution
- Rapid Reallocation





Check us  
out!

NATIONAL  
**RYAN WHITE**  
CONFERENCE  
ON HIV CARE & TREATMENT

- **Instagram:**  
Tarrantcountyhiv
- **Facebook:**  
Tarrant County HIV  
Administrative Agency  
@TarrantCountyHIV
- **Twitter:**  
Tarrant County HIV AA  
@TC\_HIV\_AA
- **Website:**  
Beathivtc.org

