

UTILIZING RYAN WHITE EARLY INTERVENTION SERVICES FOR COMMUNICABLE DISEASE INVESTIGATION SERVICES

PRESENTED BY

Emerson Kuhn, Pima County Health Department

Ricardo Fernández, Arizona Department of Health Services

Jason Peters, Maricopa County Department of Public Health

Joyce Hines, Maricopa County Department of Public Health

RYAN WHITE FUNDING & COMMUNICABLE DISEASE INVESTIGATION SERVICES

- Ryan White funding can support activities like communicable disease investigation/disease investigation services.
- All that is required by HRSA HAB is that Early Intervention Services service standard criteria are met by the jurisdiction providing these services.

RYAN WHITE EARLY INTERVENTION SERVICES CRITERIA

- Part B funds are used for HIV testing only where existing federal, state, and local funds are not adequate, and Ryan White funds will supplement and not supplant existing funds for testing.
 - Existing funding for services generally cannot simply be withdrawn from a subrecipient simply to replace them with Ryan White funds.
 - There has to be a justification of why the funds are no longer going to be available or why funds are inadequate and more funding is needed.
 - Talk to your project officer!

RYAN WHITE EARLY INTERVENTION SERVICES CRITERIA

- Ryan White funds cannot be utilized for general HIV testing or opt out testing strategies that do not focus on a defined target population.
 - For example, Ryan White funds cannot generally be used for opt out testing at a hospital emergency room or an STD Clinic.

RYAN WHITE EARLY INTERVENTION SERVICES CRITERIA

- All four components of Early Intervention Services must be present:
 - HIV testing and counseling
 - Referral Services
 - Linkage to Care
 - Health Education

RYAN WHITE EARLY INTERVENTION SERVICES DOCUMENTATION CRITERIA

- Documentation all four service components provided
- Reporting on numbers of HIV tests and HIV positives
- Documentation testing meets CDC standards
- Documentation of referrals and health education
- Documentation of linkage to care agreements

COMMUNICABLE DISEASE INVESTIGATION ACTIVITIES

- Provide linkage to care services by referring HIV positive clients to appropriate internal and external agencies for follow-up care and/or education
- Interview clients with positive result to elicit contacts and obtain epidemiological information, such as risk factors and previous disease status
- Locate, notify and interview HIV positive client's partners
- Follow up with previously tested positive HIV cases to ensure the individual is receiving ongoing medical care

COMMUNICABLE DISEASE INVESTIGATION ACTIVITIES

- Create and maintain case investigation documents, records and reports
- Provide health education and referral to clients
- Conduct client field and telephone investigations by researching, identifying, locating and contacting clients who are infected or may have been infected with HIV
- Provide patient centered care with a personalized touch through warm handoffs, patient support and follow up services.

ALIGNMENT BETWEEN CDI/DIS AND EIS SERVICES

- Broad alignment between CDI activities and what is allowable under EIS allows EIS funding to support majority of CDI activities.
- Braided or Integrated Funding Approach
- Complete Funding Approach

ADVANTAGES AND CHALLENGES OF BRAIDED OR INTEGRATED FUNDING

- More diverse programs can be funded.
- Areas not fundable by one program can be funded by another funding source.
- Greater integration between different types of services improves client experience and can simplify program workflow
- Monitoring and administering integrated programs can be more challenging

ADVANTAGES AND CHALLENGES OF COMPLETE FUNDING

- Allows for focus on one specific activity.
- Can work particularly well for smaller programs.
- Monitoring and administering program is significantly easier.
- Scope of services available constrained due to funding source limitations.

EARLY INTERVENTION SERVICES AT PIMA COUNTY

EMERSON KUHN

A BRIEF HISTORY OF THE PROGRAM

- Multiple clinic sites in Pima county
- Integrated HIV Prevention, HIV Surveillance, and STD Services in one team at the health department.
 - Achieved through combining funding from STD 0318 grant, with Integrated HIV Prevention/Surveillance 18-02 grant, and Ryan White grant funding.

PIMA COUNTY PROGRAM COMPONENTS

- Clinic Based Testing
- Outreach Based Targeted Testing
- Delivering Testing Results
- Partner Services/Solicitation of partner information/Partner notification
- Linkage to Care
- Crucial early step in successful HIV treatment, defined as completion of a first medical clinic visit after HIV diagnosis
- Data collection, reporting, surveillance
- Biomedical prevention services education

STAFF DUTIES

Program Manager

- Oversee and manage program

HIV/STD CDI'S

- Notification of positive results Partner elicitation and interview
- Follow-up on confirmatory or further testing if needed
- Biomedical prevention services education

HIV PROGRAM WORKFLOW

- Patient testing for HIV and STDs
- HIV testing results given
- Biomedical prevention services education for persons testing negative for HIV
- Linkage to local HIV specialty clinics for Rapid Start initiation into ART therapy and HIV care. (Pima County Health Department does not dispense ART directly)

ONGOING COORDINATION

- Ongoing regular communication between Pima County Health Department and specialty HIV clinics in Pima County
- Coordination with local CBOs providing case management services to quickly provide wraparound services to clients.
- Strong culture of collaboration and coordination in Pima County.

EARLY INTERVENTION SERVICES AT MCDPH

JOYCE HINES & JASON PETERS



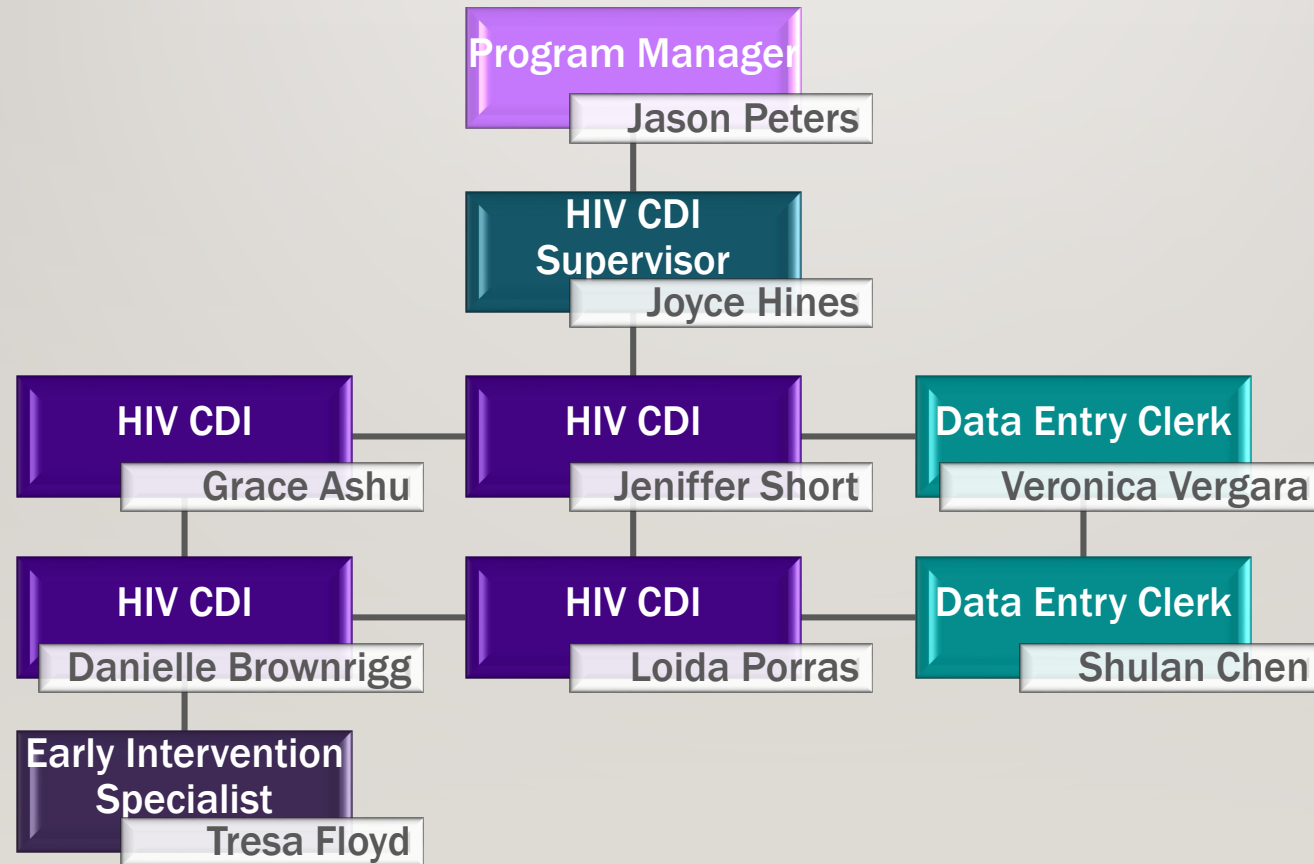
A BRIEF HISTORY OF THE CLINIC

- STD clinic for 60 years
- HIV previously combined with STD
- Request from ADHS to separate programs
- Programs separated: January, 2019

MCDPH HIV PROGRAM COMPONENTS

- Testing (funded by HIV Prevention)
- Delivering Testing Results
- Partner Services
- Solicitation of partner information
- Partner notification
- Linkage to Care (target within five days of positive HIV confirmatory test result)
- Crucial early step in successful HIV treatment, defined as completion of a first medical clinic visit after HIV diagnosis
- Data collection, reporting, surveillance
- Biomedical prevention services education

PROGRAM STAFF



STAFF DUTIES

CDI Supervisor

4 CDI'S

- Notification of positive results
- Partner elicitation and interview
- Follow-up on confirmatory or further testing if needed
- PrEP Education

2 Data Entry Staff

- Provide surveillance on all labs submitted by ADHS/outside
- Assign cases to CDI for further follow up
- Ensure data is complete and accurate

STAFF DUTIES

Early Intervention Specialist

- Address social services needs of the patient (e.g., housing, behavioral health)
- Obtain medical coverage information
- Establish immediate medical appointments
- Immediate Ryan White intake appointments
- Follow up with patient and ensure compliance
- Ensure patients that have fallen out of care are relinked to provider, including patients moving to AZ with previous diagnosis

HIV PROGRAM WORKFLOW

- Patient testing for HIV and STDs
- HIV testing results given
- Biomedical prevention services education/Linkage to Care
- Rapid Start dispensing of seven day Biktarvy medication starter pack

ONGOING COORDINATION

- Regular weekly meetings between key community partners including STD Clinic, Ryan White Part A Central eligibility office, ADAP eligibility office, primary Ryan White Part A clinic, Maricopa County Ryan White Part A Office, and ADHS to coordinate Rapid Start and troubleshoot issues.
- Agreements and ongoing coordination with community partner clinics.

QUESTIONS?

Emerson Kuhn

emerson.kuhn@pima.gov

Ricardo Fernandez

ricardo.fernandez@azdhs.gov

Jason Peters

jason.peters@maricopa.gov

Joyce Hines

joyce.hines@maricopa.gov