



VIRTUAL
**2020 NATIONAL
RYAN WHITE
CONFERENCE ON
HIV CARE & TREATMENT**

Improving Engagement in Care by Creation of Individualized Support Groups for People Living with HIV



Aubri Hickman, DNP, AAHIVS, Ryan White Program Director

Rashad Pollard, Outreach and Advocacy Specialist

Kandis V. Backus PharmD, MS, AAHIVP, Assistant Professor of Population Health Sciences

Objectives



At the conclusion of this activity, participants will be able to

- Describe the HIV landscape in Mississippi
- Examine how health inequalities, racism and stigma impact retention in care and adherence for African American/Black people living with HIV (PLWH)
- Justify why individualized support groups are absolutely necessary to end the HIV epidemic

Healthy People 2020

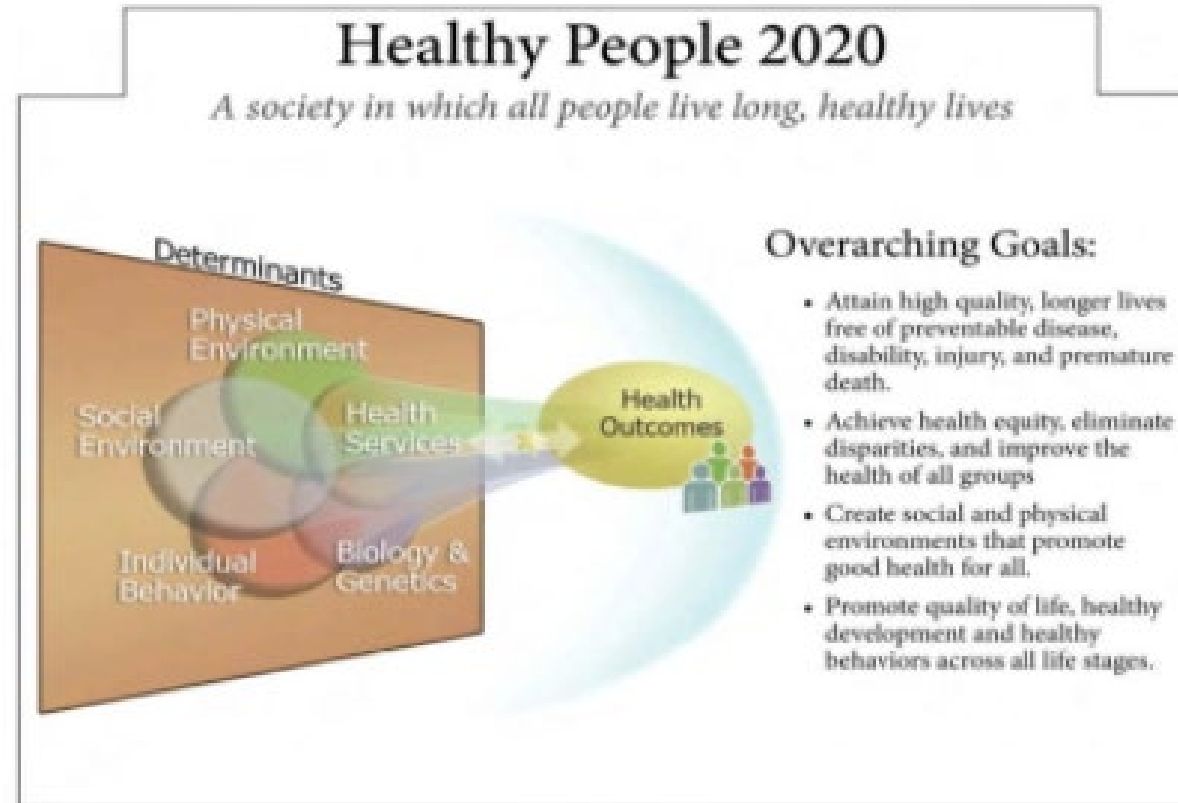


- Response to the 1985 *Report of the Secretary's Task Force Report on Black and Minority Health*
- Goal was to achieve health equity, eliminate disparities, and improve the health of all groups for 2020

Healthy People 2020 Continued



VIRTUAL
2020 NATIONAL
RYAN WHITE
CONFERENCE ON
HIV CARE & TREATMENT



Healthy People 2020 Framework. Graphic from
www.healthypeople.gov.

Ending the HIV Epidemic: A Plan for America

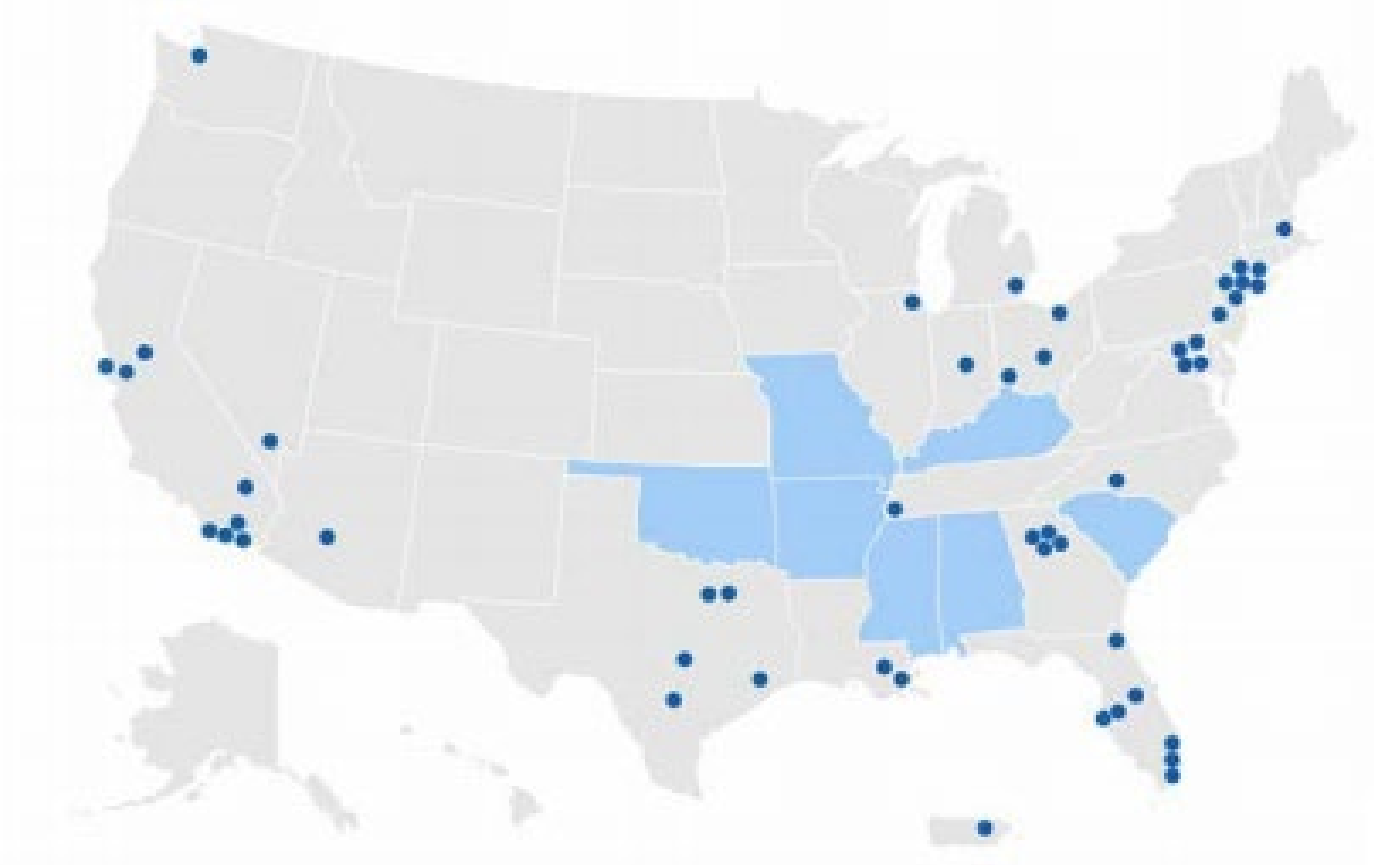


- Facts
 - >1.1 million Americans are living with HIV
 - ~40,000 Americans being newly diagnosed each year
- Goals
 - 75% reduction in new HIV infections in 5 years
 - 90% reduction in new HIV infections in 10 years
- Why Now?
 - Pre-Exposure Prophylaxis (PrEP)
 - HIV treatment
 - New technology

Ending the HIV Epidemic: A Plan for America Continued



VIRTUAL
2020 NATIONAL
RYAN WHITE
CONFERENCE ON
HIV CARE & TREATMENT



Health Inequity and HIV

30



LIFETIME RISK FOR HIV

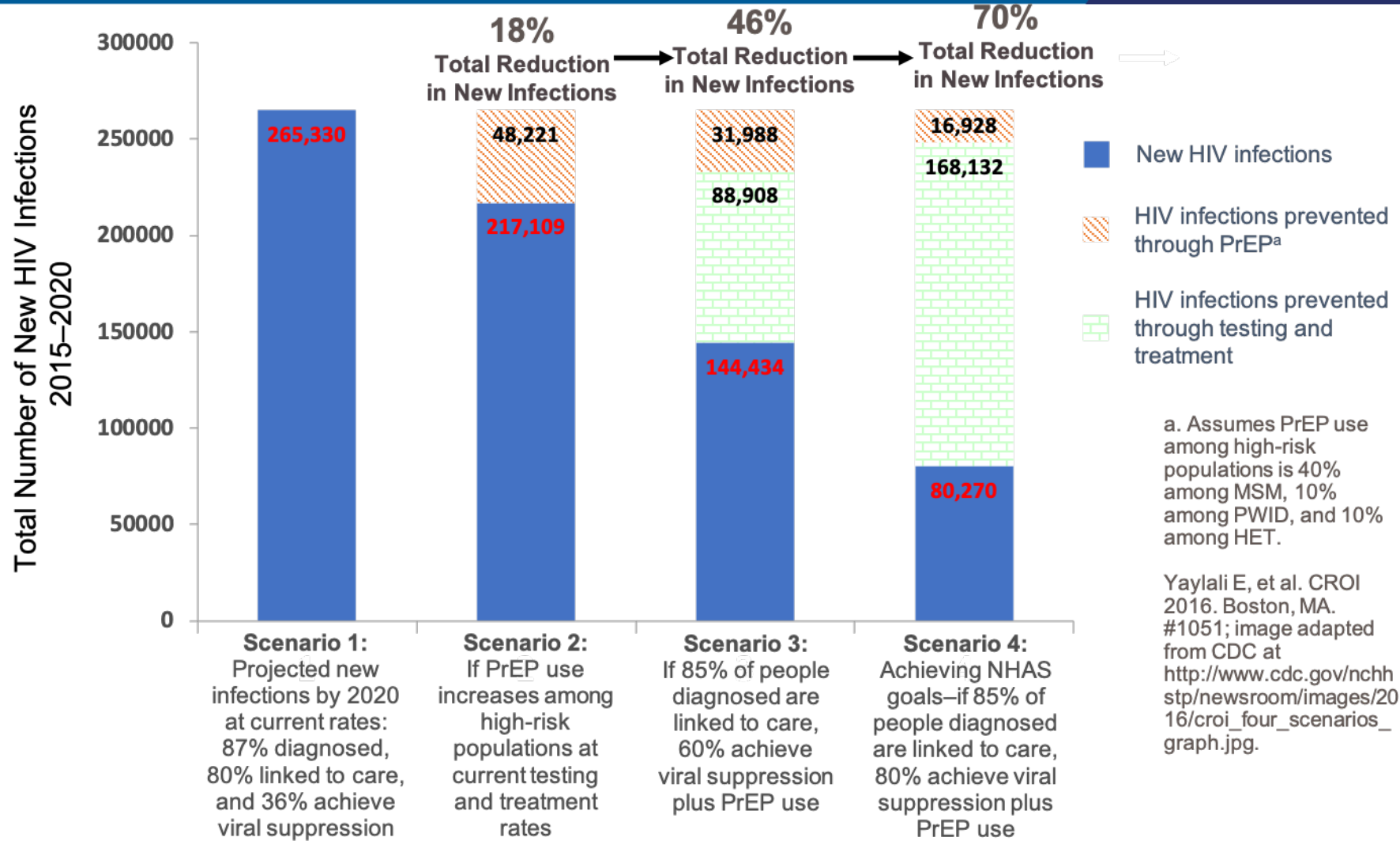
	WOMEN	MEN	MSM
WHITE	1 IN 880	1 IN 132	1 IN 11
HISPANIC	1 IN 227	1 IN 48	1 IN 4
BLACK	1 IN 48	1 IN 20	1 IN 2



Men who have sex with men (MSM) are >40 times more likely to have HIV than other men.

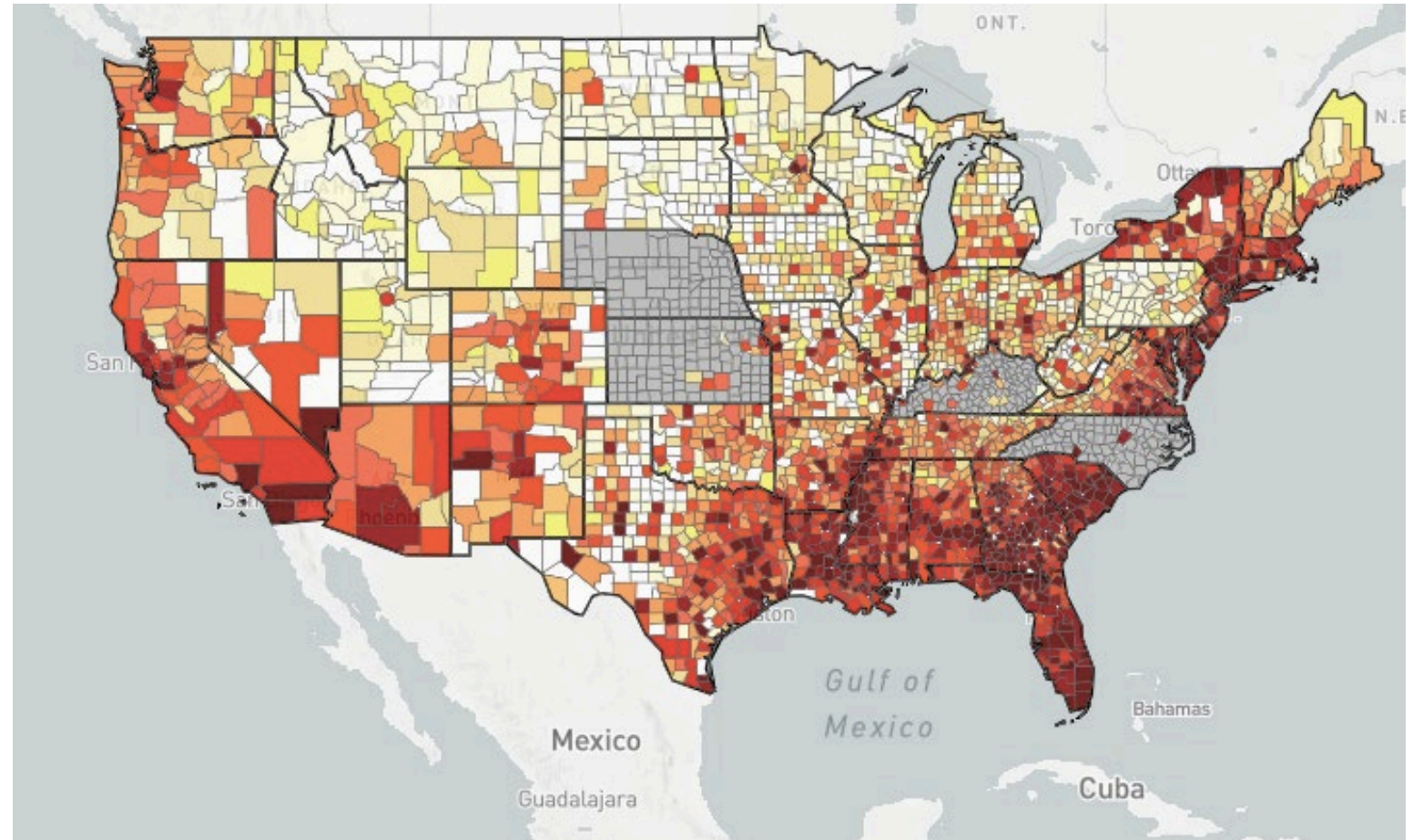
Hess K, et al. CROI 2016. Boston, MA. #52; Adapted from CDC at <https://www.cdc.gov/nchhstp/newsroom/2016/croi-2016.html#Graphics2>.

A Model Study of the Impact of Improving Diagnosis, Care and Treatment Among Persons Living With HIV and Delivering PrEP to Persons at Risk of HIV, United States, 2015–2020



HIV in the US and MS

- Mississippi is a national HIV hotspot
- 6th highest rate of HIV diagnosis
- MS only state to report an increase in new diagnoses in 2017



Jackson Medical Mall



SHOWCASE

MEDICAL MALL

jacksonmedicalmall.org

JACKSON MEDICAL MALL FOUNDATION

PRIMUS WHEELER, DIRECTOR
SERVE THE UNDER-SERVED
ECONOMIC DEVELOPMENT
COMMUNITY DEVELOPMENT
CREATIVE INNOVATION HUB

The Jackson Medical Mall Foundation (JMMF) transformed an abandoned mall into a health, culture and economic hub for depressed communities in a designated Opportunity Zone. Operating at more than 90% occupancy, JMMF fuses healthcare, entrepreneurship, creative arts, economic development and tech innovation within a central hub of community activities.



- 340B Pharmacy
- Ryan White Dental Clinic
- MSDH Five Points Clinic
- Express Personal Health (EPH)
- Adult Special Care Clinic (ASCC)



CHALLENGES IN HIV CARE IN THE SOUTH

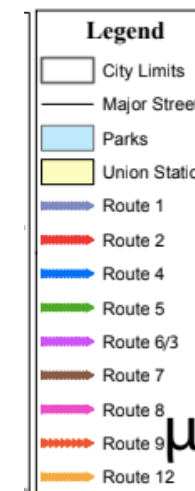
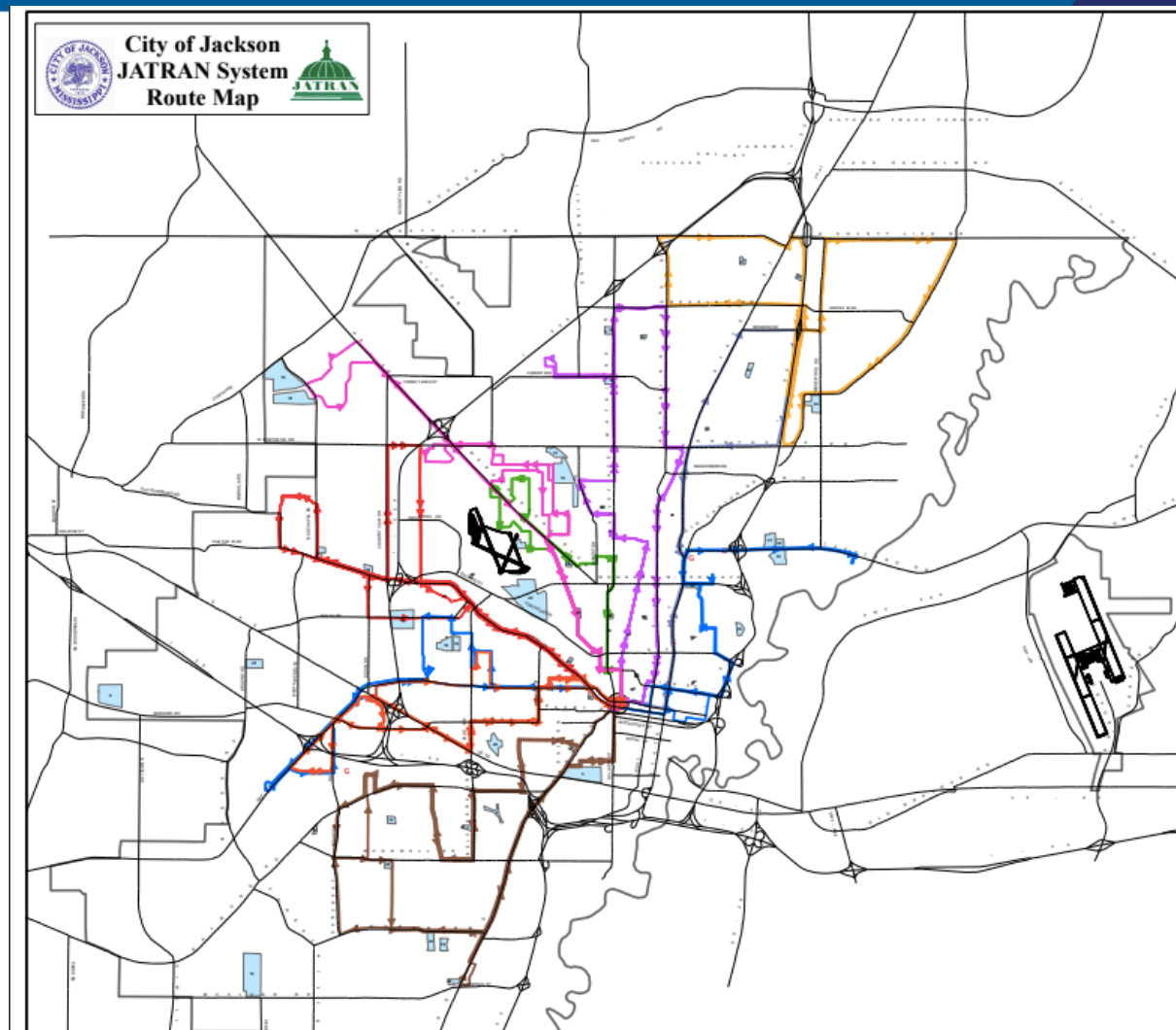


- Rurality: Large distances & shortage of health care providers
- Race: Increased proportions of African Americans & racial disparities in health care
- Poverty
- Poor health
- Infrastructure
- Poor IT infrastructure
- Distrust in health care system
- Inadequate funding
- Lack of education
- Underestimation of person risk
- Anti-immigrant
- HIV stigma & “aggressive homophobia”

CHALLENGES IN HIV CARE IN MS



VIRTUAL
2020 NATIONAL
RYAN WHITE
CONFERENCE ON
HIV CARE & TREATMENT



CHALLENGES IN HIV CARE IN MS Continued



VIRTUAL
2020 NATIONAL
RYAN WHITE
CONFERENCE ON
HIV CARE & TREATMENT



Adult Special Care Clinic (ASCC)



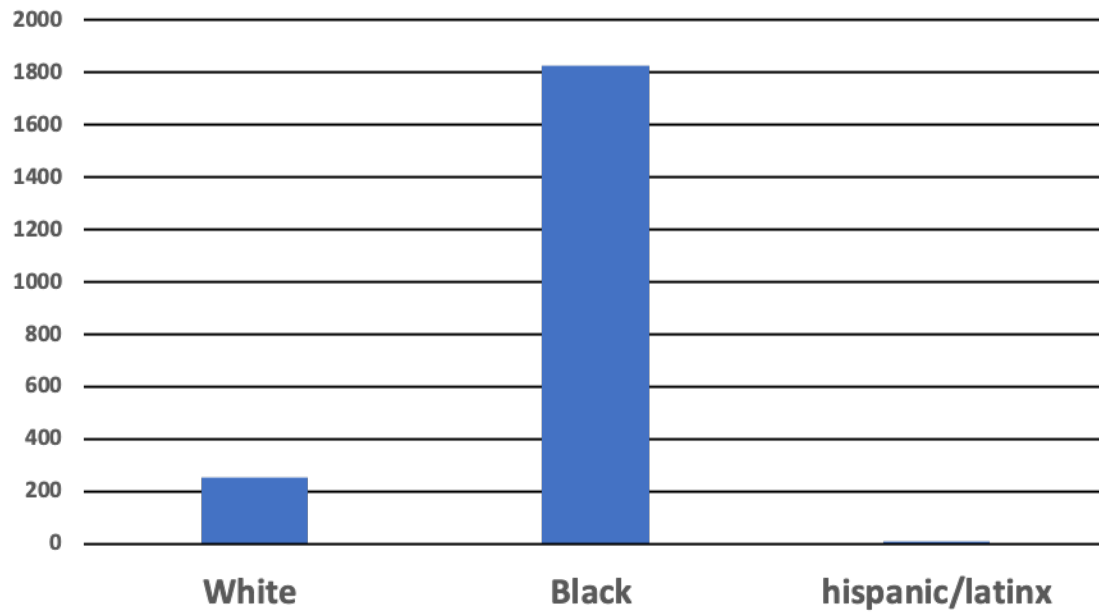
- 4 full-time NPs
- 3 part-time NP
- 6 part-time ID trained MDs
- 1 clinical PharmD
- **Specialty Pharmacy program**
 - Retail trained PharmD
 - CPhT
- 3 Peer- Navigators
 - **Linkage to Care Coordinator**
- 2 Social Work Case Managers
- 4 RN case managers
- 1 Mental Health Coordinator
- **In-house substance use program (SAMHSA)**

- 2058 actively enrolled patients
 - 41 newly diagnosed in 2020
 - 33 newly enrolled in HIV care
 - 71% are classified as <100% FPL
 - 1.3% trans-female
 - 63.3% male
 - 36% MSM and 65% heterosexual
 - 28% uninsured
- Clinical Outcomes
 - 11.2% had CD4<200 during 2019
 - Viral suppression rate 87.5%

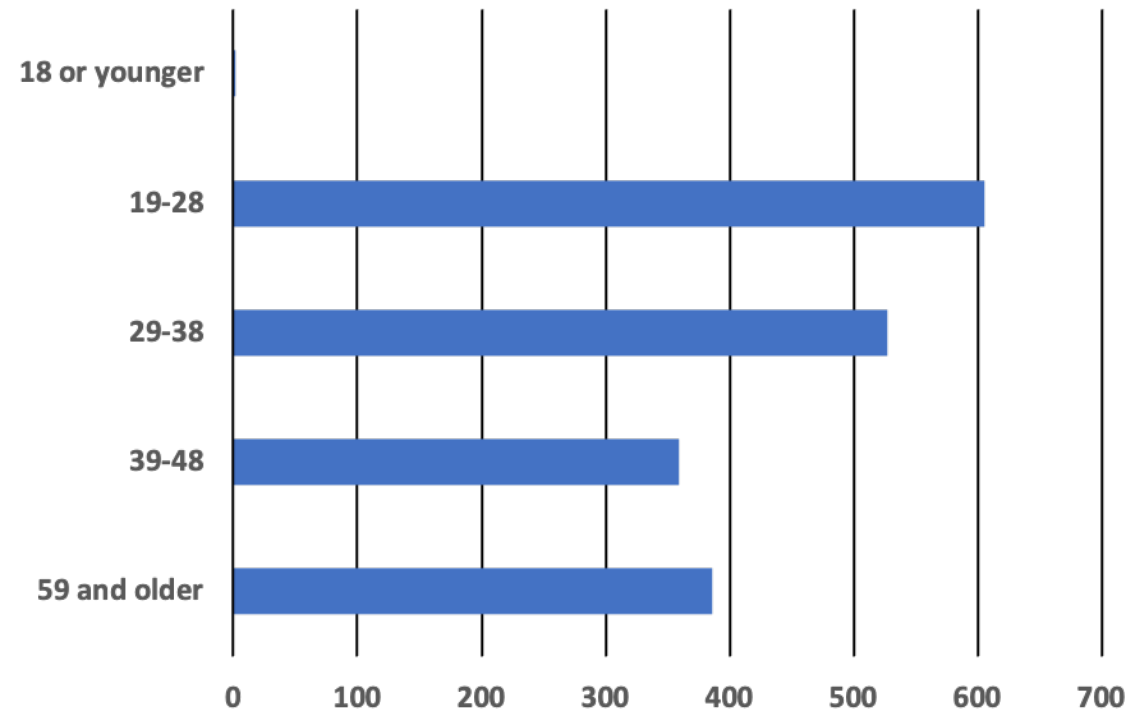
ASCC Continued



Race/Ethnicity



Ages in ASCC



Support Groups at ASCC



- The Kickback- March 2019
 - ~6 young men
- Women Like Me-January 2019
 - ~14 women
- Beautiful Transformation- January 2020
 - ~5 women each month
 - PLWH and people not living with HIV
 - Trans-women only
- Coffee Talk-
 - ~2 people over 50 years old

Means of Group Communication



- Face-to-face meetings
- FaceTime®
- GroupMe®
- Text messaging

Women Like Me



- Focus on young, African American/Black females
- Initiated January 2019 with six initial members
- Pre-Covid there was over 20 active members
- Working on finding new “norms” during current pandemic

The Kickback



- Focus on young, African American/Black MSM
- Initiated in February 2019 with four initial members
- Pre-Covid there was 15 active members
- Working on finding new “norms” during current pandemic

- Compared viral load measurements at entry to support group to the last viral load measurement resulted for the 2019 calendar year.
- Comparison of baseline and endpoint viral load measurements showed a significant ($p=0.03$) difference between the two measurements
- Only 11 of the 31 participants (35.5%, $n=31$) were found to be virally suppressed ($VL < 200$ copies) prior to entry of the support groups
- All 31 participants were found to be virally suppressed ($VL < 200$ copies) at the last viral load measurement obtain during 2019

Limitations



- Cost to host monthly meetings
- Adequate staff
- Privacy

Acknowledgements



University of Mississippi Medical Center

- James B. Brock, MD, MSCI, FACP
- ASCC Staff
- Patients of ASCC

Questions/Comments

