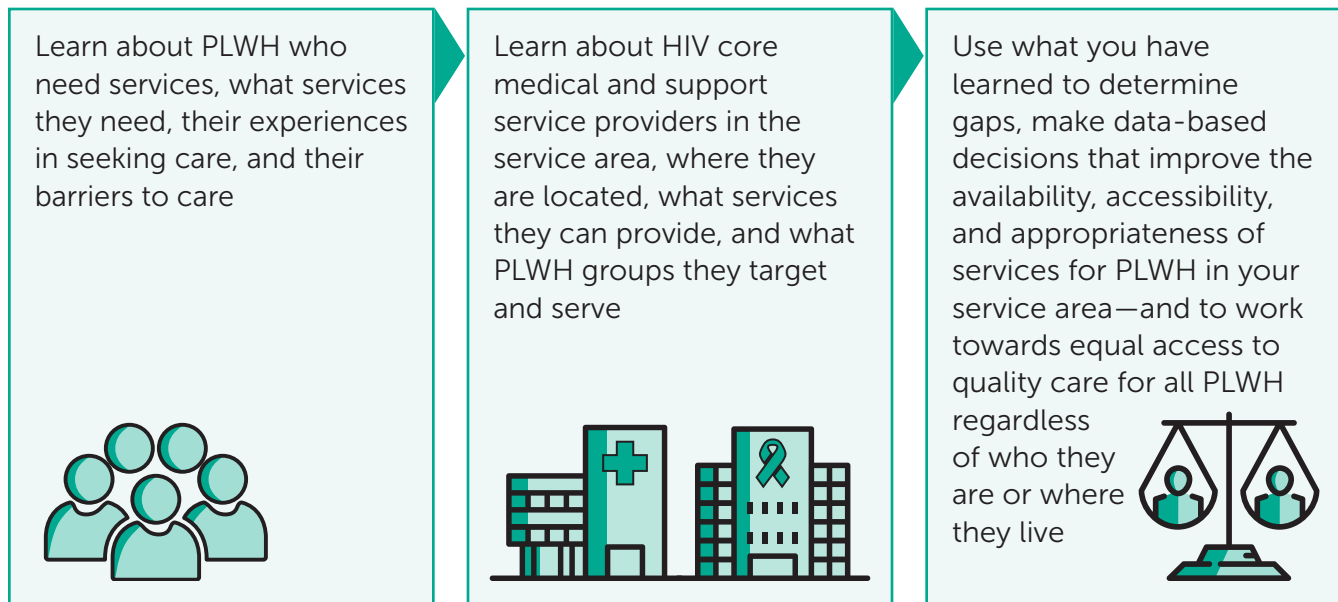


Quick Reference Handout 4.1: Needs Assessment—Putting the Pieces Together

The Purpose of Needs Assessment



Putting the Pieces Together: Needs Assessment Components

I. Information You Receive from State or Local Surveillance Staff and Use in Assessing Needs

What do you need to find out?	What is this part of the needs assessment called?
<ul style="list-style-type: none"> • Number of people in your service area (EMA or TGA) who are living with HIV disease <ul style="list-style-type: none"> – Who they are—age, race/ethnicity, gender, risk factor, year of diagnosis – Where they live 	Epidemiologic Profile
<ul style="list-style-type: none"> • Number of people living with HIV in your service area who know their status but are not receiving HIV medical care <ul style="list-style-type: none"> – How many people are out of care – Who they are and where they live, based on surveillance data 	Estimate of Unmet Need
<ul style="list-style-type: none"> • Number of people living with HIV in your service area who are unaware of their status <ul style="list-style-type: none"> – Estimate of how many people have HIV but are unaware – Who we think they are—age, race/ethnicity, gender, risk factor—and where we think they are most likely to live based on surveillance data 	Estimate of PLWH Who are Unaware of their Status

II. Information You Obtain through Your Needs Assessment

What do you need to find out?	What is this part of the needs assessment called?
<ul style="list-style-type: none"> • For all PLWH in your service area: <ul style="list-style-type: none"> – Their service needs – Their experiences in getting care – What barriers they face – What needed services they haven't been able to get • For people living with HIV who know their status but are not in care: <ul style="list-style-type: none"> – Why they are not in care – What is needed to help them enter and stay in care 	<p>Assessment of Service Needs and Barriers</p>
<ul style="list-style-type: none"> • Provider Information—for All HIV-related Core Medical and Support Service Providers in Your Service Area <ul style="list-style-type: none"> – Who they are – What services they provide – Where they are located 	<p>Resource Inventory</p>
<ul style="list-style-type: none"> • Provider Information—for All HIV-related Core Medical and Support Service Providers in Your Service Area <ul style="list-style-type: none"> – Who they serve – How much of the services they can provide – How easy is it for PLWH to access their services—location, hours, disability-accessible facilities – How appropriate the services are for various groups of PLWH—based on race/ethnicity, language, gender/gender identity, sexual orientation, age 	<p>Profile of Provider Capacity and Capability</p>

III. Review and Analysis of Information from All Sources

What do you need to find out?	What is this part of the needs assessment called?
<p>Assess service needs and gaps by reviewing and comparing the data from:</p> <ul style="list-style-type: none"> • Surveillance-related data from recipient/surveillance staff: <ul style="list-style-type: none"> – Epi Profile – Estimate of Unmet Need – Estimate of PLWH Who are Unaware of their Status • Information gathered by the PC/PB: <ul style="list-style-type: none"> – Assessment of PLWH Service Needs and barriers – Resource Inventory – Profile of Provider Capacity and Capability • Other data on service utilization and client characteristics 	<p>Assessment of Service Needs and Gaps</p>

What do you need to find out?	What is this part of the needs assessment called?
<p>Provider Information—for All HIV-related Core Medical and Support Service Providers in Your Service Area</p> <ul style="list-style-type: none"> • Who they are • What services they provide • Where they are located 	Resource Inventory
<p>Provider Information—for All HIV-related Core Medical and Support Service Providers in Your Service Area</p> <ul style="list-style-type: none"> • Who they serve • How much of the services they can provide • How easy is it for PLWH to access their services—location, hours, disability-accessible facilities • How appropriate the services are for various groups of PLWH—based on race/ethnicity, language, gender/gender identity, sexual orientation, age 	Profile of Provider Capacity and Capability

This resource was prepared by JSI Research & Training Institute, Inc. and EGM Consulting, LLC, and supported by the Health Resources and Services Administration (HRSA) of the U.S. Department of Health and Human Services (HHS) under grant number U69HA30795: Ryan White HIV/AIDS Program Planning Council and Transitional Grant Area Planning Body Technical Assistance Cooperative Agreement. This information or content and conclusions are those of the author(s) and should not be construed as the official position or policy of, nor should any endorsements be inferred by HRSA, HHS or the U.S. Government.

