

# AIDS Care Group

Creating a Dental Home – Access  
to Care Through a SPNS Initiative

# Primary Office in Chester



# AIDS Care Group FAQs

- AIDS Care Group – Chester, PA
- Incorporated 1998
- Ryan White Parts A, B, C, D, HOPWA, SPNS, CDC, State, County, and Title X
- 80% of funding is for clinical care and medical case management including the Special Projects of National Significance
- 20% of funding is for education, outreach, and HIV testing and supportive services.

# AIDS Care Group

- 960 patients served in 2009 for primary clinical care services and medical case management
- 265 clients received supportive services for food, shelter, and clothing
- 1,900 HIV tests provided
- Delaware, Chester, Bucks, Montgomery, Philadelphia, Dauphin, Lancaster, and ten other Counties served



- With principal offices in Chester, the AIDS Care Group has blended its services into the third poorest city of its size in the nation; the city with the highest crime rate in its county; and the county with the third highest incidence rate of HIV disease in the state.

- 20% of the clients seen for medical care and services do not have clean, safe, or affordable housing.

# Barriers to Care

- Pennsylvania has the worst dental reimbursement program of any of the nation's Medicaid programs.
- 50% of the clients seen have Medicaid, the others are the working poor.
- Private dental offices are driven by the profit motive.





# The Hook is Food

- Poverty and hunger are pervasive in Chester's central business district.
- Without a poster advertising the opening of the Drop-in-Center, the knowledge of a new morning breakfast center became instantly well-known.
- Clients came to expect that food and an educator were on-site.







- The distribution process was linked to medical care. Patients could leave with food provided they had all of their immunizations up to date. Staff were on-hand all-day long to provide immunizations, Paps, or other needed health care services.





# The Hook Can be Clothing

- Coats for clients has been providing clothing for over eleven years.



# The Hook is Transportation

- Transportation was added as a service in 1999.
- As a resistor to care, lack of transportation was listed in the top three by clients.
- AIDS Care Group staff found vehicles and programs to support transportation services.
- Our motto became “We’ll come and get you”.







# Clinical Care

- The AIDS Care Group was started by clinicians and meant to be a clinically-based organization.
- It is now a clinical and social-services based organization where the clinical care division is busy due to efforts through outreach to keep clients linked to their providers.















# Supportive Services

- Transportation
- Food
- Clothing
- Clean, safe, affordable housing
- Art therapy
- Alternative therapies





# ART SAVES LIVES

*The SWG All-Stars supports the AIDS Care Group*

*"We make a living by what we get. We make a life by what we give."\** The Sande Webster Gallery is honored to do exactly that in hosting a group show in support of the non-profit AIDS Care Group of Chester, Pennsylvania in their effort to apply for the 2005-2006 Partnership to Promote Arts and Healing Grant Program. Taking one step further, 10% of all proceeds from artworks sold will be donated to support hundreds of local individuals living with the AIDS virus.

*\* Sir Winston Churchill*

*right: Moe Brooker*

*on front, clockwise from upper left:*

*John McDaniel, Sica, Ian Jarvis, Andrew Turner, Tara Good, James Brantley, James Atkins*



**October 14 – November 4**  
**opening reception: FRIDAY, October 14, 6-8pm**

**Sande Webster Gallery**  
2006 Walnut St., Philadelphia, PA 19103  
t.(215)636-9003 • f.(215)636-9008 • artswg@aol.com  
[www.sandewebstergallery.com](http://www.sandewebstergallery.com)

# Days of Sunshine

- Every holiday is an excuse to bring clients into our community.
- What is your excuse to bring clients into your community?



















# Special Projects

The AIDS Care Group was awarded a Special Projects of National Significance grant for “Demonstration Model of Oral Health Care Delivery”

A new clinic was established in Coatesville in October, 2006



# AIDS Care Group

- 698 patients served in 2006
- Delaware, Chester, Bucks, Montgomery, Philadelphia, Lancaster counties served
- Special Projects of National Significance (SPNS) funding awarded in Sept. 2006



- Philadelphia, Lancaster counties serve
- Special Projects of National Significant (SPNS) funding awarded in Sept. 2006





TH  
JECT  
aque, DDS, PhD

PROTOCOL

**Unarticulated Challenge**

- Increased number of children presenting with dental issues
- Expanded geographic area for service and delivery - far from a single central office including rural and isolated geography - 7 counties together, 14 counties
- Population - increased 12,000 over 10 years



**Greatest Accomplishments**

- Creation of access to quality care
- IRB approval August 2, 2007



**your teeth's**  
need to see a dentist





# Gathering Place

*"Unto Him shall the gathering of the people be..." Gen.49:10*

440

All are welcome!

## Neighborhood Church

Bible Study - 9:15 AM  
Sunday Service - 10:00 AM

*Isaiah 58 in Action*

*...And you shall be called the Repairer of the breach, the Restorer  
of streets to dwell in. Is. 58:12*













Commerce  
Bank  
TRIPLE CROWN  
OF CYCLING











PINNACLEHEALTH

*Polyclinic Hospital*



**DENTAL  
SCREENING DAY**

Please come to  
**6<sup>th</sup> Floor  
Classroom 4**


To sign in!


-Cori







 **EMERGENCY**

 MAIN ENTRANCE

 JAMES STREET PARKING

 LIME STREET PARKING

 Lancaster General  
Hospital

 RECYCLING  
ENTRY AT  
SEA CHURCH





Special projects help our agency to grow and become more expert in the field of HIV medicine and social services.



# BEING A SAFETY NET PROVIDER

- Many of the clients that we treat who are now committed to their on-going and comprehensive care would not go to local dental offices because they were treated poorly and discriminated against for their inability to pay; or their addictions; or HIV disease.

- Kaposi's Sarcoma became a badge of dishonor among those living with AIDS and became its own barrier to receiving care.





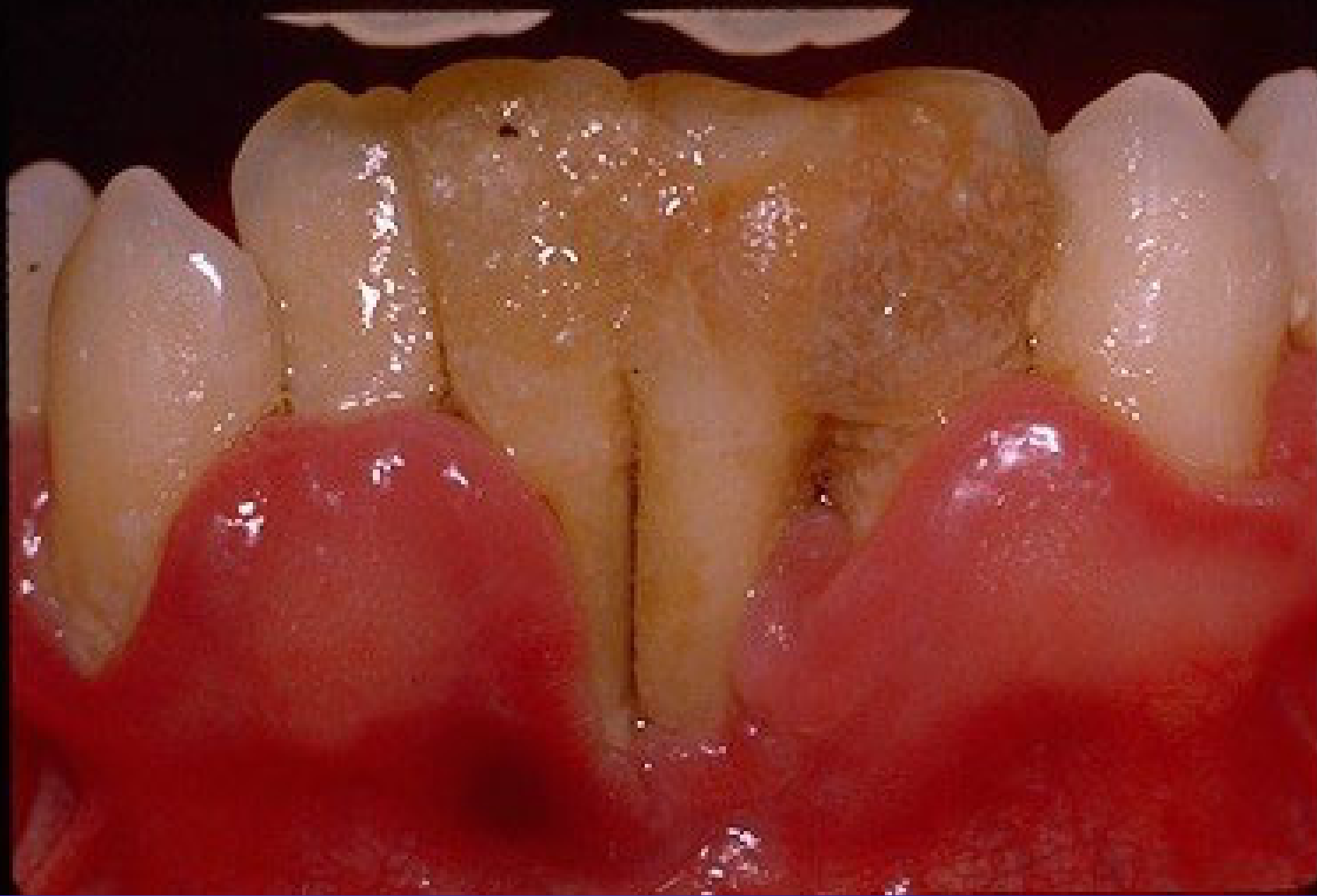
- Cc: “I would like my smile to look better. And, my bottom teeth are loose.”



- “I want dental care, but I don’t want medical care. I have seen my friends die from AIDS and I don’t want treatment.”







- Patient was transported to clinic by his mother who stated that currently no dentists in their community would see her son; the one that did see him quoted a very expensive treatment plan, which they could not afford.



- Attempts to link dental care to medical care were unsuccessful.

- The patient never wanted to leave the dental setting with a “broken smile”.













# Bridges to Care

- The success of the AIDS Care Group has been attributed to the non-judgmental approach to accepting clients into care regardless of their lifestyle or addictions.
- Outreach stresses the need to go where people are:
- It can mean meeting people in hospitals, food distribution centers, religious meeting places, or social service agencies.
- It can also mean meeting people in prisons and jails, drug and alcohol treatment centers, or crack-houses.
- Once linked to the patient, the bridge to care must be defined; and it may be through multiple enhancements, including a reliable means of transportation; or clothing, food and shelter; or job training; or these and much more.

- Perhaps these efforts will provide us with more and better clues on how to address people and their behaviors to help individuals and communities strive to better health.

- This work of ours is meant to improve the health of individuals, families, and communities.
- It is our campaign.





CAMPAIGN TO  
**END  
AIDS**

CAMPAIGN TO ENDAIDS.ORG

